

Unisto Hi-Genius



The ISO 17712 certified and C-TPAT compliance High Security Bolt Seal is the number one solution to seal Freight Containers, Truck Doors, Trailers and Goods Wagons. Very popular in the Shipping, Transport, Air Cargo and Retail industries. A tensile strength of more than 1000 kg prevents opportunistic theft. Removal requires special bolt cutters. Permanent marking of customer name and consecutive numbering or barcode for fast, accurate data capture. Available in a range of plastic colours.

[Certificate ISO 17712 Hi-Genius](#)

[Certificate ISO 17712 Hi-Genius \(bare-pin\)](#)

Features of this security seal

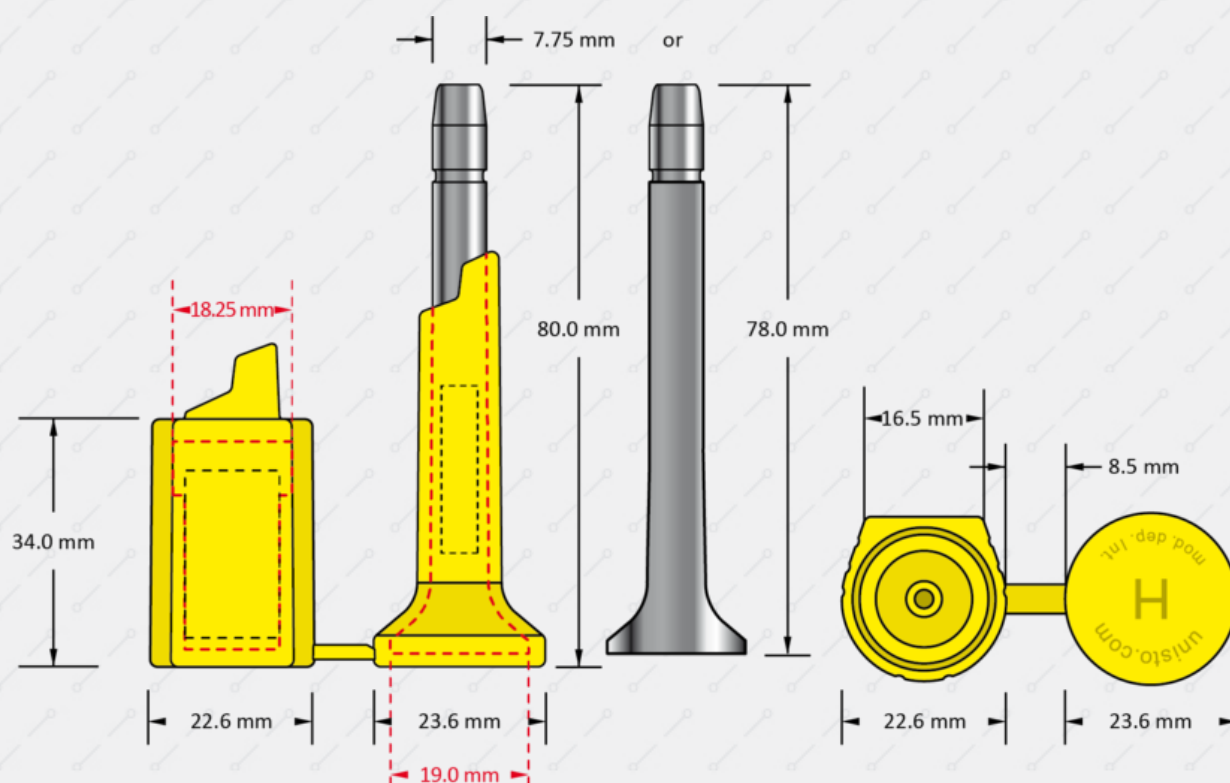
Type of Seal

Bolt Seals

Application

Container

- › Interlocking petals when closed provides evidence of attempted tampering by spinning
- › Steel locking body increases security level
- › Steel components excel the requirement of a minimum diameter of 18 mm
- › Pulling force 1'000 kg minimum prevents opportunistic theft
- › Customer name /logo for clear identification
- › Laser engraved numbering - impossible to change, increases security level
- › Numbers on bolt and body prevents substitution of component parts
- › Hi-Genius is fully ISO 17712:2013 compliant, incl. clause 6 "Testing for Evidence of Tampering"
- › available in ABS coated steel pin or bare steel pin configurations



Materials

Bolt: steel, silver zinc pattern

Body and spring: steel

Coating: Acrylonitrile Butadiene Styrene (ABS)

Tensile strength

Above 10 kN (1000kg)

Numbering

up to max. 7 digits

Barcoding

barcode 128, interleaved 2/5, others on request

Customer name/logo

Directly laser marked

Plastic colours (laser)

pink, light blue, light yellow, light green and white

Packing

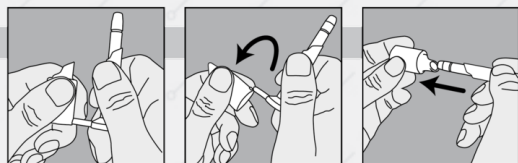
Tray - 10 pieces per tray, 200 seals per carton Box - 20 pieces per box, 200 seals per carton Polybag - Individual pack, 10 pieces per polybag, 200 seals per carton (Bare metal pin configuration only)

Packing size

inner box 280 x 59 x 87 mm

| | | | | |
|---------------------|-----------|-----------------|----|---------|
| carton | tray type | 405 x 210 x 215 | mm | 16.0kg |
| | box type | 310 x 298 x 190 | mm | 17.7kg |
| bare metal pin type | box type | 450 x 210 x 215 | mm | 11.5 kg |

How to close



How to open

